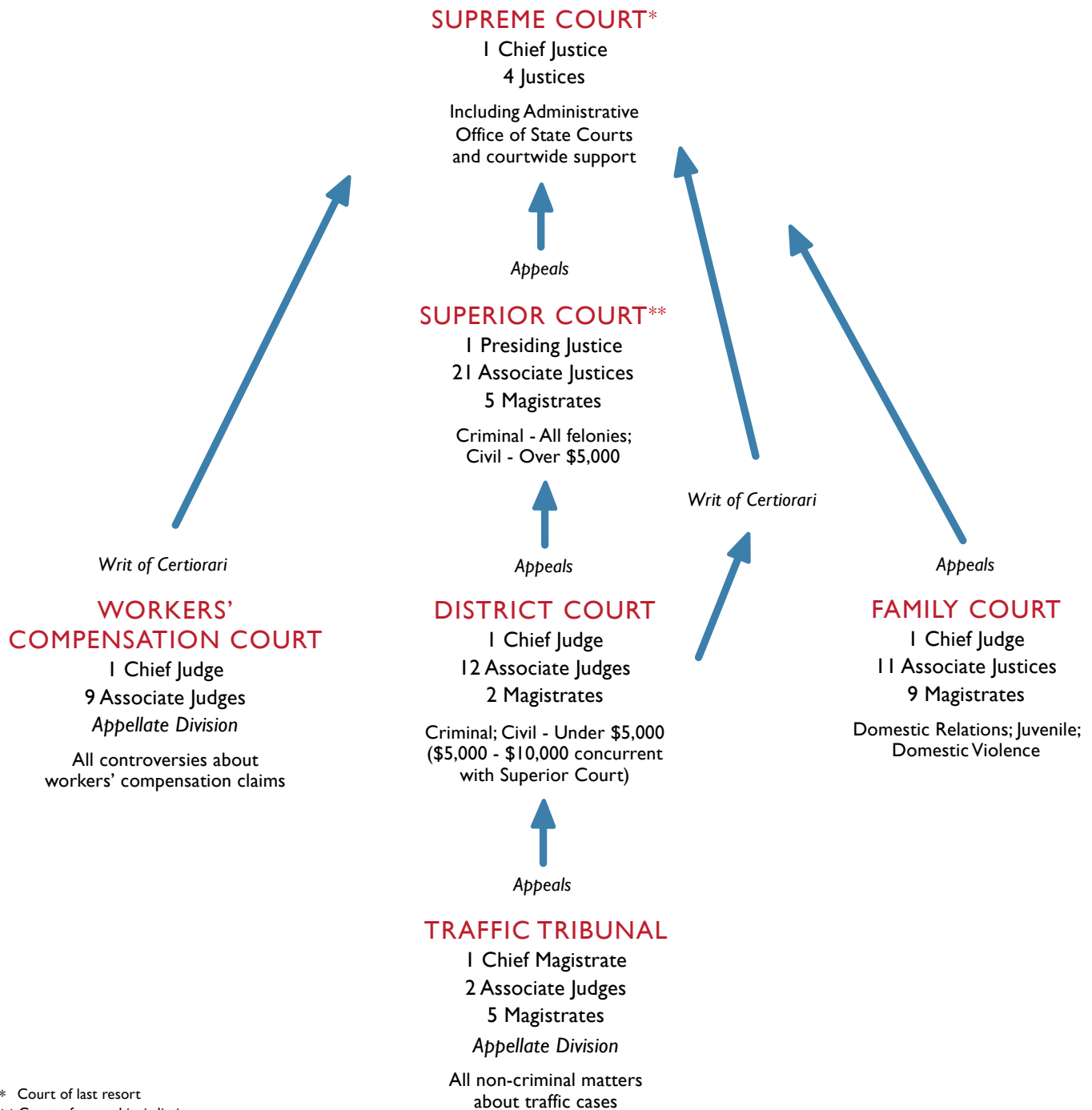


Rhode Island Court Structure

ADMINISTRATIVE OFFICE OF STATE COURTS

State Court Administrator • Finance and Budget • Employee Relations
 State Law Library • Judicial Technology Center • Facilities and Operations/Security
 Judicial Records Center • Domestic Violence Training and Monitoring Unit
 Mandatory Continuing Legal Education • Community Outreach and Public Relations
 Law Clerk Department • Judicial Planning • General Counsel and Alternative Dispute Resolution
 Disciplinary Counsel • Supreme Court Clerk's Office • Appellate Screening
 Administrative Assistant to Chief Justice • Interpreters' Office



* Court of last resort
 ** Court of general jurisdiction
 All other courts have limited jurisdiction